

CMUCopy

Special Note for Windows 95 and Windows Me Users

Application Note

Release Note



Contents

1	Special Note for Windows 95 and Windows Me Users.....	2
2	Additional Information.....	4

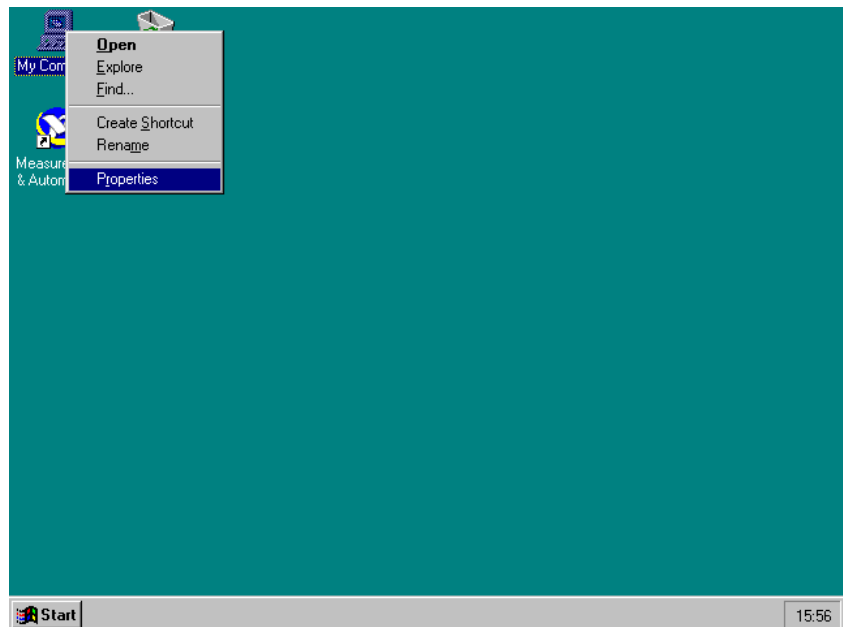
1 Special Note for Windows 95 and Windows Me Users

Due to some problems in the National Instruments Driver, CMUCopy will perhaps not work correctly with a PC running Windows 95 or Windows Me as operating system.

To solve the problem, please disable Direct Memory Access (DMA) usage for the IEEE card on your computer.

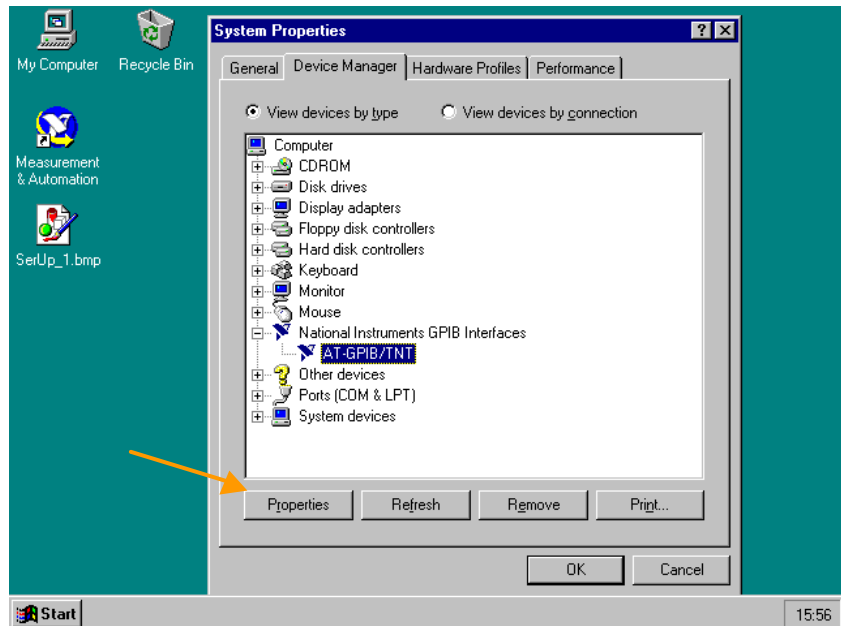
To disable, please follow the 5 steps below:

1. Open the property page of your PC:

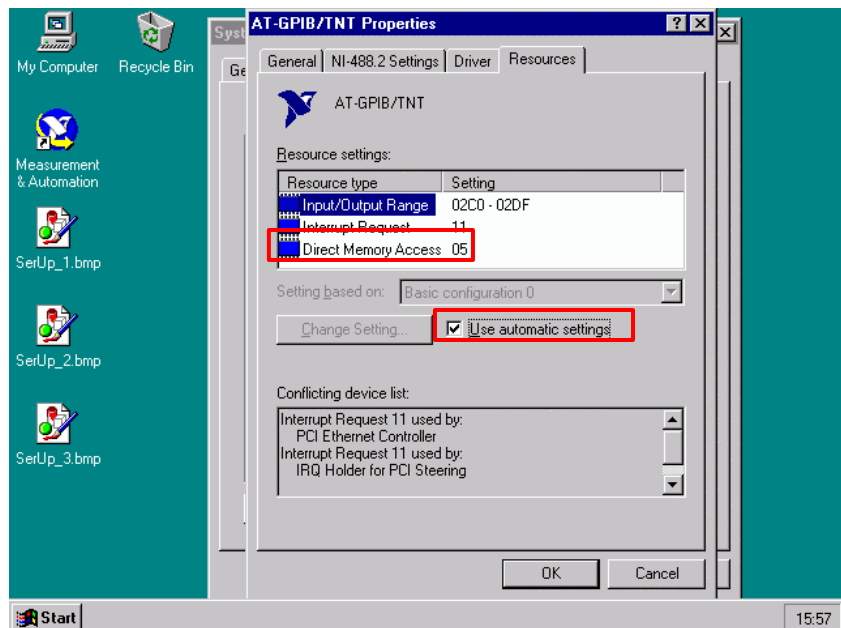


CMUCopy - Windows 95 and Me Information

2. Select your IEEE bus card and select "Properties":

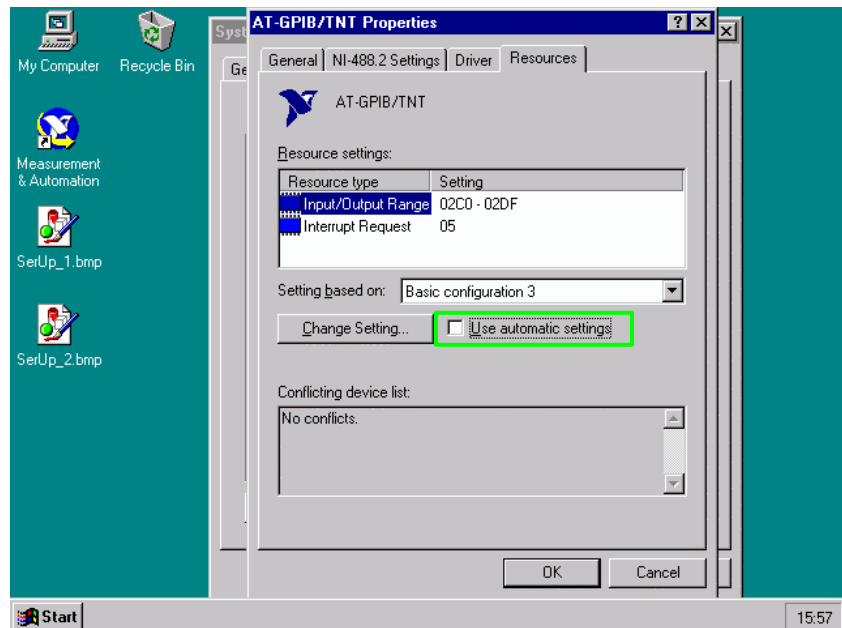


3. By default, an automatic configuration might be selected:



CMUCopy - Windows 95 and Me Information

4. Switch off the automatic setting and select a configuration which does NOT use DMA:



5. After rebooting, CMUCopy will work correctly.

2 Additional Information

Please contact TM-Applications@rsd.rohde-schwarz.com for comments and further suggestions.



ROHDE & SCHWARZ GmbH & Co. KG · Mühlendorfstraße 15 · D-81671 München · P.O.B 80 14 69 · D-81614 München ·
Telephone +49 89 4129 -0 · Fax +49 89 4129 - 13777 · Internet: <http://www.rohde-schwarz.com>

This application note and the supplied programs may only be used subject to the conditions of use set forth in the download area of the Rohde & Schwarz website.